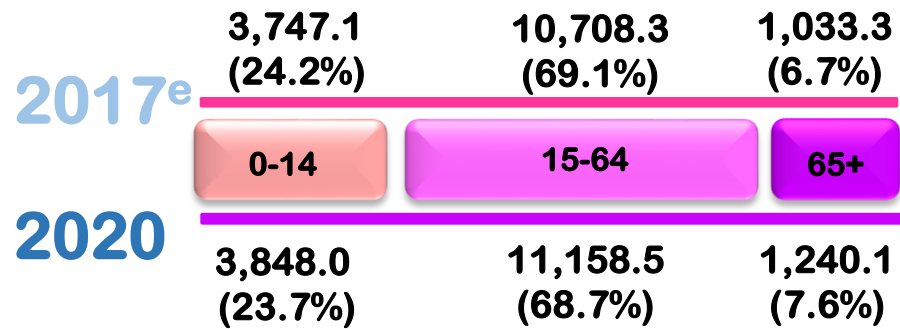
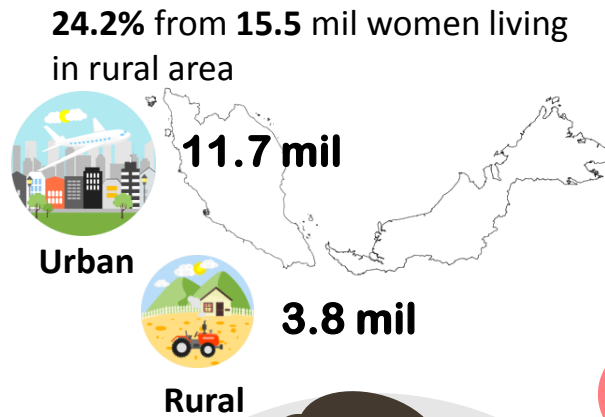




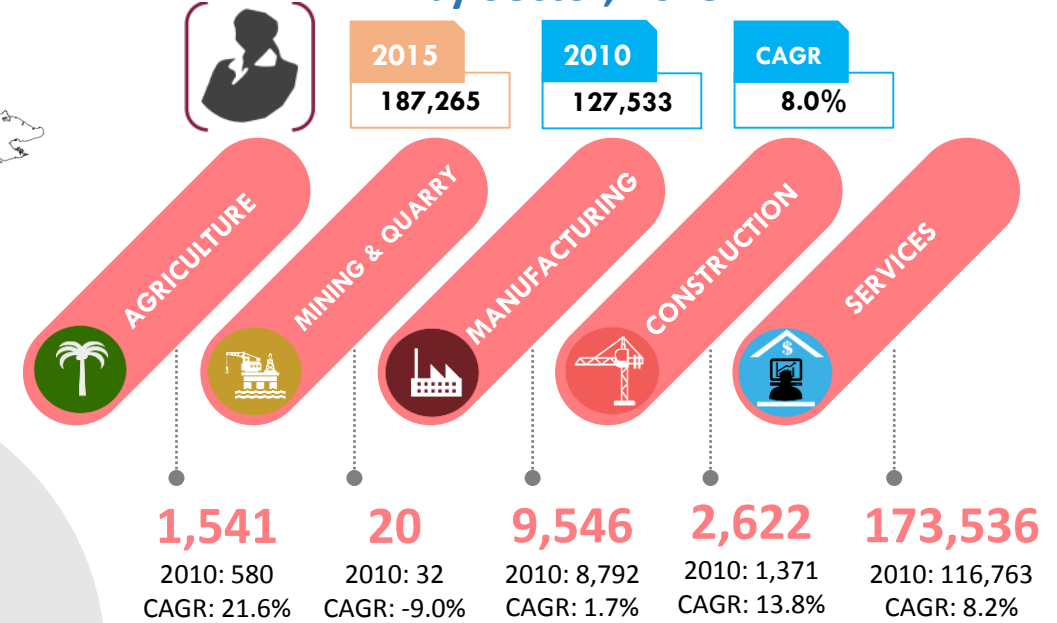
### Women Population by Age Group ('000)



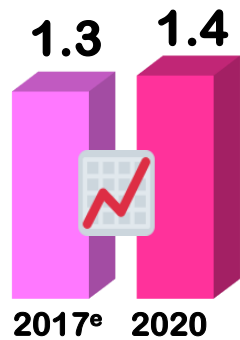
### Women Population by Location, 2017<sup>e</sup>



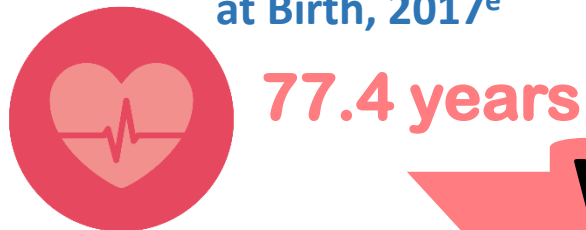
### Women Owned Establishments by Sector, 2015



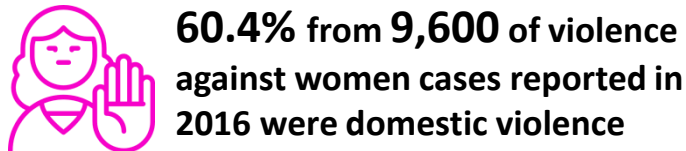
### Annual Population Growth Rate for Women (%)



### Women Life Expectancy at Birth, 2017<sup>e</sup>



### Violence Against Women 2016



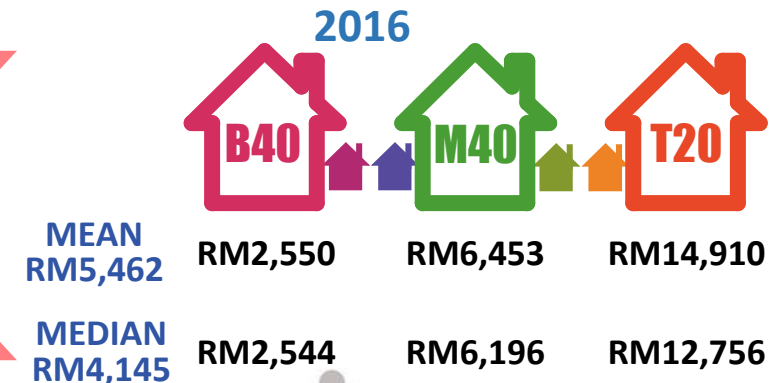
## WOMEN IN FIGURES

15.5 mil out of 32.0 mil population in 2017<sup>e</sup>



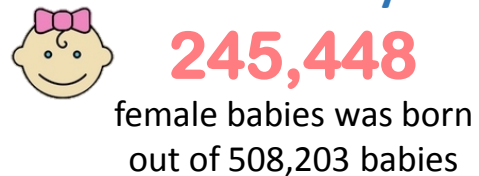
Sex ratio: 102 male per 100 female<sup>1</sup>

### Monthly Household Income – Women<sup>2</sup> 2016



## 2016

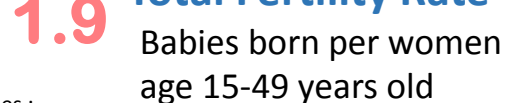
### Live Births by Sex



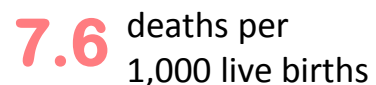
### Sex Ratio at Birth



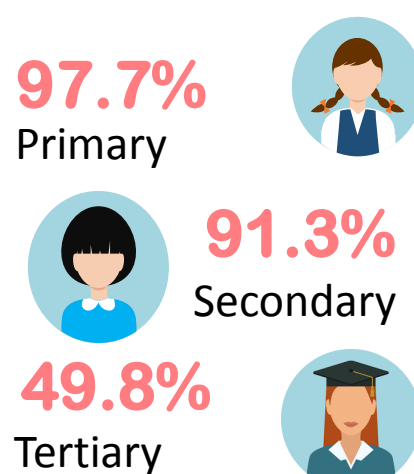
### Total Fertility Rate



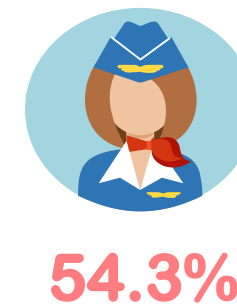
### Under-5 Mortality Rate for Girls



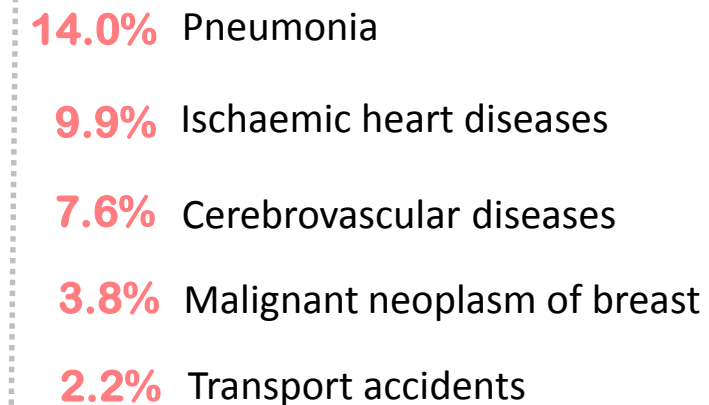
### Enrolment Rates



### Labour Force Participation Rate (LFPR)



### Top 5 Causes of Death



Notes :  
e – estimate  
1 - Malaysia citizens  
2 - Head of Household is woman  
2017 based on population estimates  
2020 based on population projections  
CAGR : Compounded Annual Growth Rate